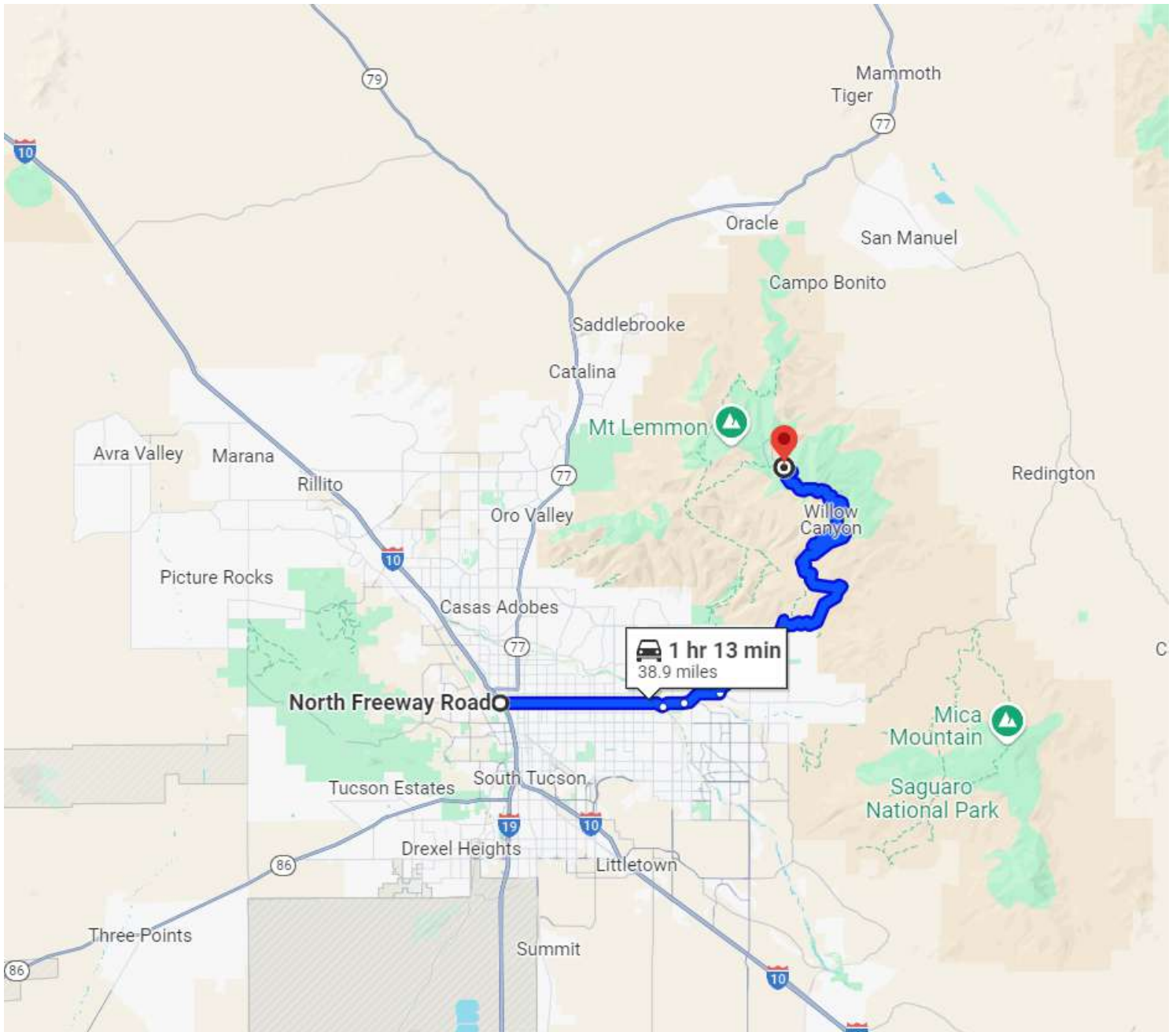


Overview- from Grant Road Exit on I-10, it is approximately 1 hour and 15 minute drive.

Click below or scan a QR code to start navigation



Navigate via Apple Maps

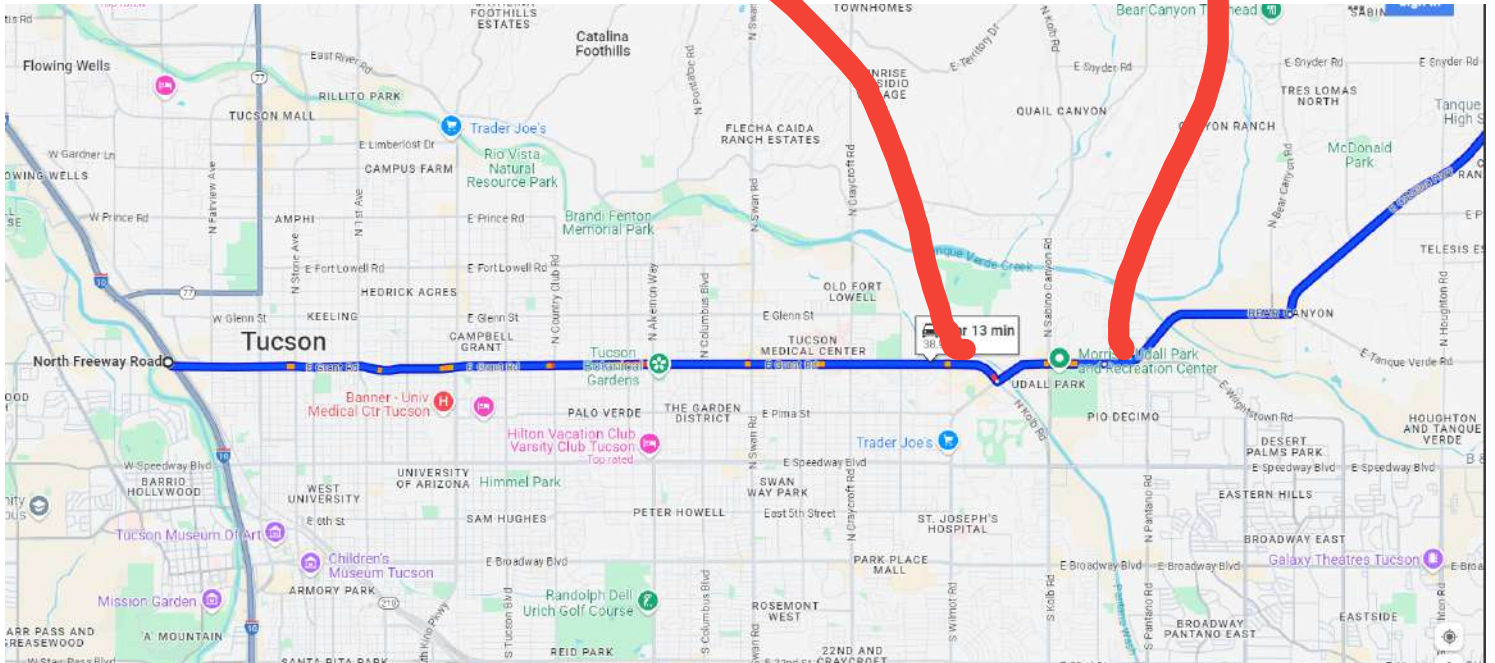
Navigate via Google Maps



# Follow Grant Road east across town.

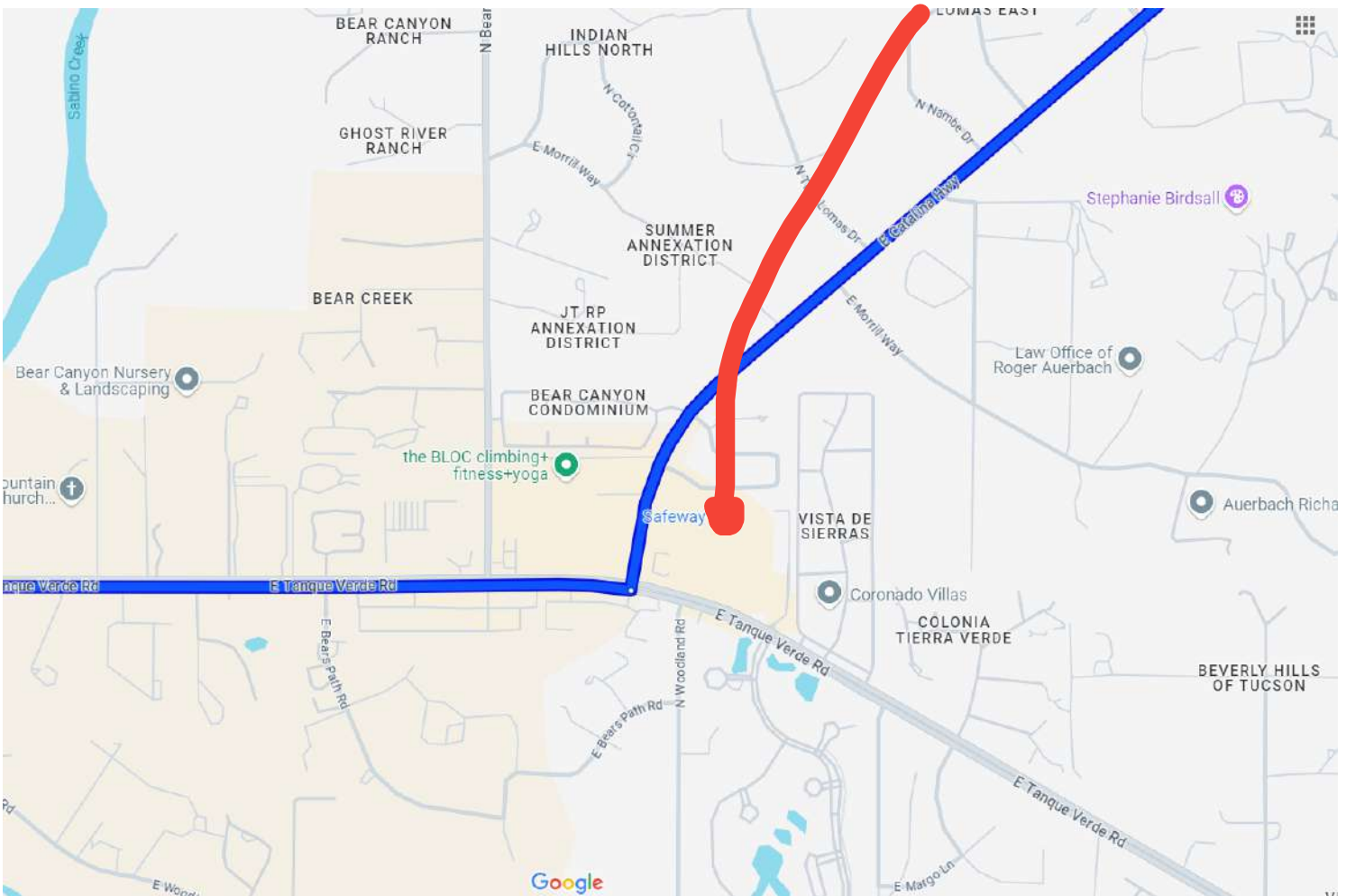
At Tanque Verde, just past Costco, turn left to continue east.

At Camino de Pecimo, stay in left lane to continue east on Tanque Verde

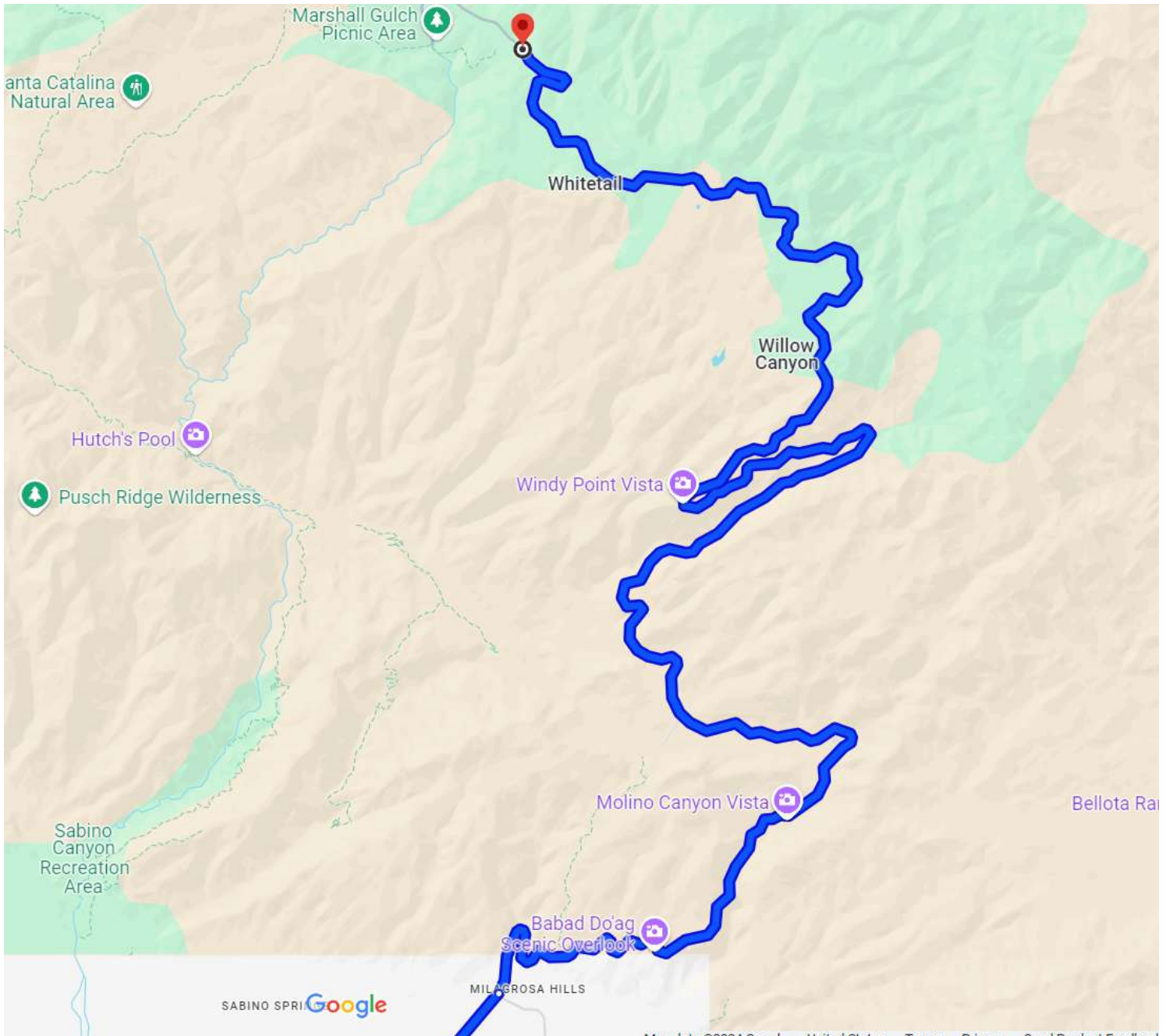


At Cataline Highway, turn left.

Safeway parking lot  
is the best place to  
meet for carpool up  
the mountain



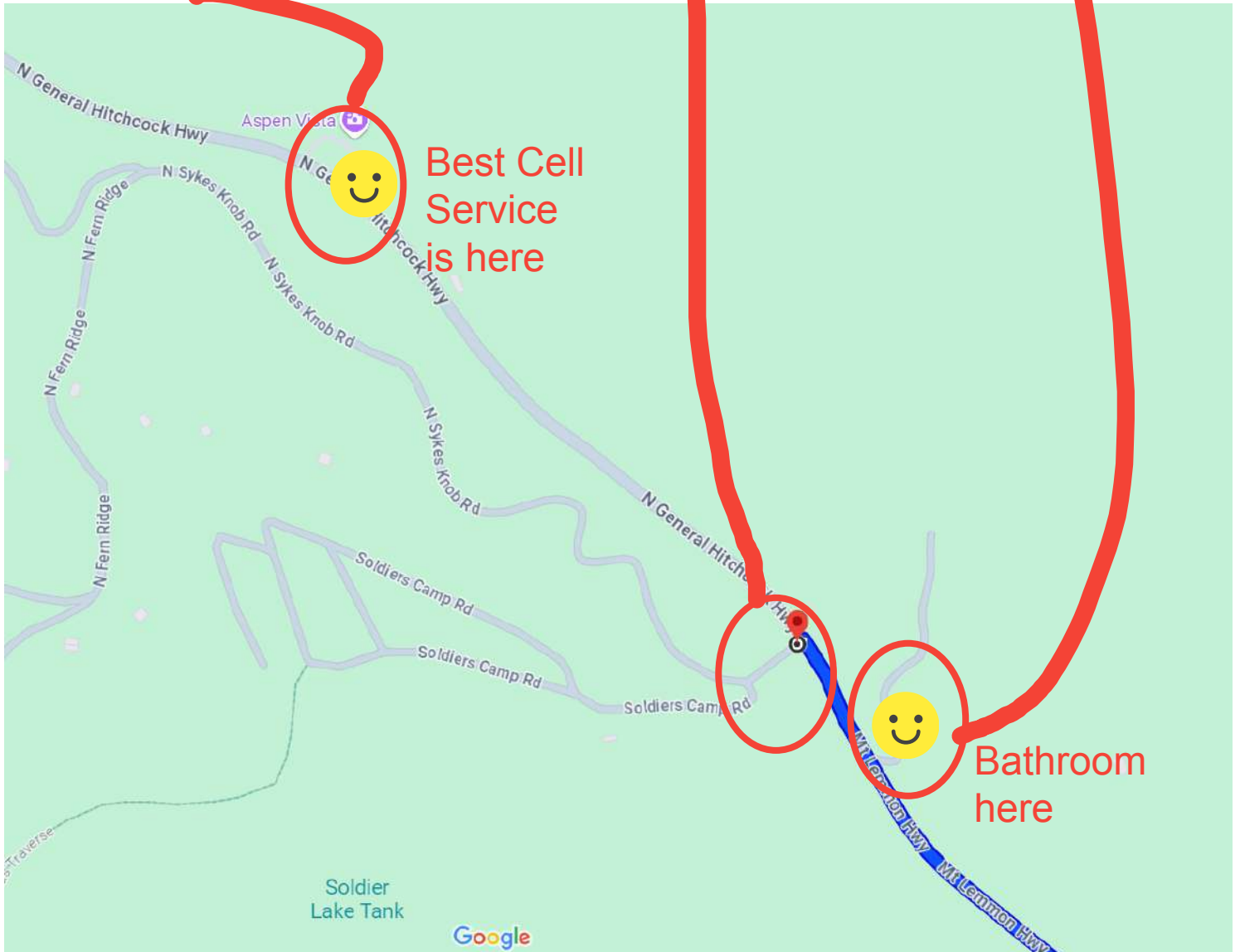
22 miles up Mt Lemmon Highway, aka General Hitchcock Highway. There is no cell service from mile 3 until the parking area.



Just past mile marker 22 is the Sunset Trail parking area. Park in the spaces provided or along the dirt road that goes up the hill to the right (Sykes Knob). there is no parking on the road into the cabin .

Also parking at the Aspen Vista pullout about 1/4 mile up the road.

Backup parking area at Butterfly Trail parking across the street.



Best Cell Service is here

Bathroom here

This is the view when you get to the parking area



Street sign at entrance to parking area



Walking to the cabin. Follow the road as shown. It is about a 5 minute walk. There will be signs and ribbons to show the way.

There may or may not be cell service, depending on your carrier. There is very good service at the Aspen Vista viewpoint.

**If you would like a ride from your car, please call David (972) 672-4210 or Mike (520) 271-4423 and we will send a driver to get you.**

